



# NAVIS™

YACHT DESIGN & LIFESTYLE

ISSUE 86 | OCTOBER/NOVEMBER 2025

WALLY 33M  
**WALLYWIND  
110**

wallywind 110

**MONACO YACHT SHOW 2025**

A Celebration of Craft, and the Pursuit of Zero-Emission

**47 M M/Y ACQUA CHIARA**

Sculpted by the Sea

**ROLEX FASTNET RACE**

Skill and Strategy Define the Centenary Edition

**KEMPINSKI HOTEL DAS TIROL**

Alpine Redefined

**SONEVA JANI, MALDIVES**

Signature Experiences in Gastronomy and Wellness

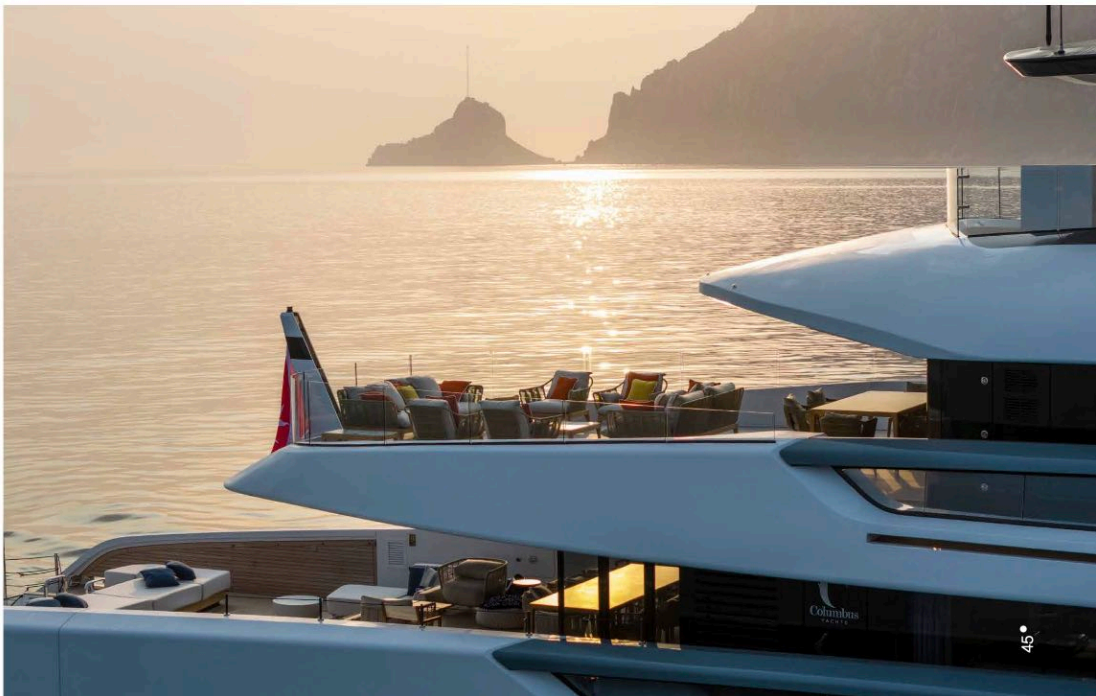
[www.navisyachts.com](http://www.navisyachts.com)

MOTOR YACHT



Columbus Yachts Atlantique 47m  
ACQUA CHIARA

Photos: Giovanni Malgarini | Words: K.L. Turner





Driven by a passion for nature and discovery, Columbus Yachts' Atlantique models display precisely sculpted hull lines echoing the streamlined shapes of marine fauna, similar to one of the fastest fish in the sea, the sailfish. Slipping through the water with a stern design usually reserved for modern sailing yachts, the 47-meter Atlantique Acqua Chiara allows guests an intimate connection with the sea, hovering just 50 cm above the waterline. It simply doesn't get better than that.

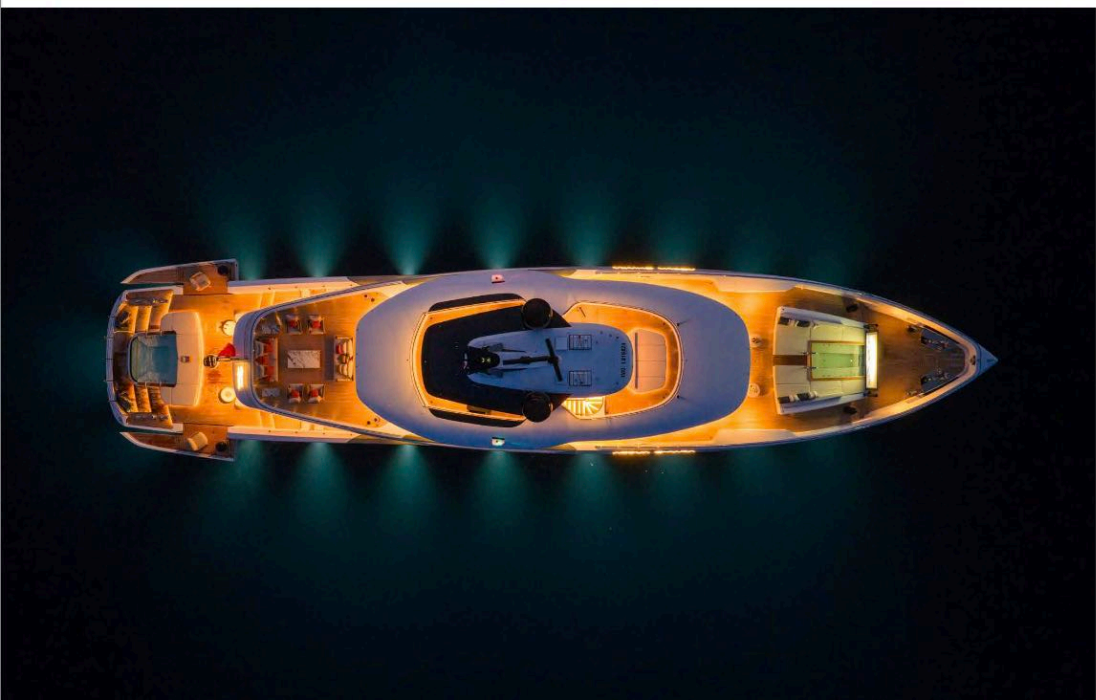
#### **Acqua Chiara By The Numbers**

Delivered in 2025 to Italian entrepreneur Danilo Lervolino, Acqua Chiara's steel hull, topped with an aluminum superstructure, measures 47 meters. The yacht has a 9.10-meter beam and a 2.60-meter draft at 496 GT. A pair of Caterpillar 1319 HP engines powers Acqua Chiara to a maximum speed of 15.5 knots. Finding her cruising speed at 14.5 knots, Acqua Chiara can travel 3,400 nautical miles at 12 knots, while zero-speed stabilizers work both at anchor and underway to smooth the voyage.

Built at the Columbus Yachts yards in Ancona, Italy, Acqua Chiara provides luxurious accommodation for ten guests in five staterooms. The yacht can comfortably house nine crew members, ensuring impeccable, uninterrupted service. Infinity pools on the stern beach club and the upper deck bow offer guests pleasant choices with fabulous views.

Acqua Chiara put the in-house talents of Columbus Yachts to work on naval engineering, using Milan, Italy-based Hot Lab Yacht Design for the distinctive exterior as well as the posh interior. The open stern, the fluid deck design, the stylish bulwarks, and the thoughtful layout all contribute to a gentle, relaxing experience on board. The exterior is smooth and easy on the eye. The interior is understated and chic, employing a range of blues as crisp accents for white furnishings, soft goods, Sicis mosaics, and Vetrice glass slabs.

Being an Italian brand, iconic soft goods on board reflect comfort and luxury at every turn, from the Loro Piana throws fashioned in cashmere, to the distinctive tables set with Hermes, and the carefully curated wines indulging even the most discerning palates. Guests will find nothing but the best throughout the yacht, but particularly in bath accessories and personal products.





### The Main Deck

Emphasizing the essence of a life at sea, Acqua Chiara opens her wings to port and starboard of the stern infinity pool, expanding the beach and swim area in celebration of water. The hull sports an open stern design like that on many racing yachts under sail, saving on weight while providing a quick drain for any water on board.

A C-shaped sun pad cradles the forward edge of the pool, offering a comfortable, sunny spot to dry off after a dip. A pair of sofas to port and starboard, protected under the roof of the upper deck, sit forward of the sun pads. Up a couple of steps further forward, a protected table encourages alfresco dining. A table for ten encourages guest interaction for a convivial meal. Pale cushioned bases attract casual throw pillows in blues and stripes, coordinating nicely with the Acqua Chiara emblazoned beach towels.

Stepping into the main deck saloon through glass doors, an expanse of white nubby-textured sofas, piped in marine blue, sits atop a sandy carpet. Long sofas to port and starboard have small tables integrated midway. A matching sofa marks the forward end of the space. An island sofa adds back-to-back seating for a crowd, with tables at each end.

Two Fendi Totu armchairs are stationed in strategic locations, served by a teak coffee table. Above the chairs, an integrated 75-inch flat screen behind Stopsol glass provides exceptional viewing of the day's photos, the latest film, or an important sports event. White parquet flooring and natural oak ceilings lacquered in matte white continue the casual, beachy feel. Full-height windows deliver breathtaking views and abundant natural light.

The dining area finds a marble-topped table for ten, appointed with sandy-hued dining chairs, cupped into black tubular frames. Set athwartships, both port and starboard sides feature full-height windows for big views while at sea. Forward of the saloon, a portside galley is professionally equipped, ready for the talents and needs of an accomplished chef dedicated to pleasing every guest's preference.

To the starboard side of a central lobby, the owner's cabin soothes and calms with yet another palette of blues over white. Galaxy blue book-matched glass walls are complemented by dark brown leather and burnished metal bed frame and bedside tables.

A sofa and a large wardrobe welcome the cabin guests with a homey feel. The large ensuite bath, with tub, shower, hammam system,

and vanity, serves up comfort and luxury in white marble with silver geometric mosaic wall coverings designed by Galena Sisis.

Acqua Chiara's central staircase is executed in burnished metal featuring a handrail wrapped in hammered brown leather. A Vetrite wall with a multi-hued palette provides a backdrop. Tubular borosilicate glass Cantalupi lamps with a twist of black and white metal finish the look.

### The Upper Deck

Starting with the scenic infinity swimming pool forward on the upper deck, guests can either choose that active pursuit or a more passive position on the sun loungers, sofa, and side tables. A large blue, black, and white custom mosaic by Sisis covers the bow wall. Just aft, a pantry and day head sit to port, connected to a central lobby leading to the bridge and the Captain's cabin.

An additional, more formal dining table in the lounge area comfortably seats 12 for a more sophisticated meal. The teak and marble table is rimmed with Minotti chairs, and the chandelier is by Vbizzuno from their Linea collection. Full height windows to both port and starboard pair with the massive glass entry to stern for a generous view from this terrace on the sea. At the stern end, another spacious lounge area with sofas and armchairs join a dining table for eight, all from Talenti in beautiful teak.

### The Lower Deck

Acqua Chiara treats guests royally with two king-bed cabins and two twin-bed cabins. All are ensuite done with marble and Sisis geometric mosaics. Each cabin has a distinctive Vetrite glass wall set behind dark metal bed frames with dark brown leather, contrasted with soft white carpet in the cabins and the lobby.

Bedside lamps by Oluce from their Superluna line grace the double cabins. Created in gold and black metal, they present a striking accent while providing the perfect glow before retiring.

Doors to all sleeping areas are built in metal and glass interlaid with Syntarqui's Aquafili metallic fabric, presenting a vibrant, transparent look that playfully interacts with light. Decorative appliques recalling paper lanterns like those found in Japanese temples are from Bonbori-Brokis.

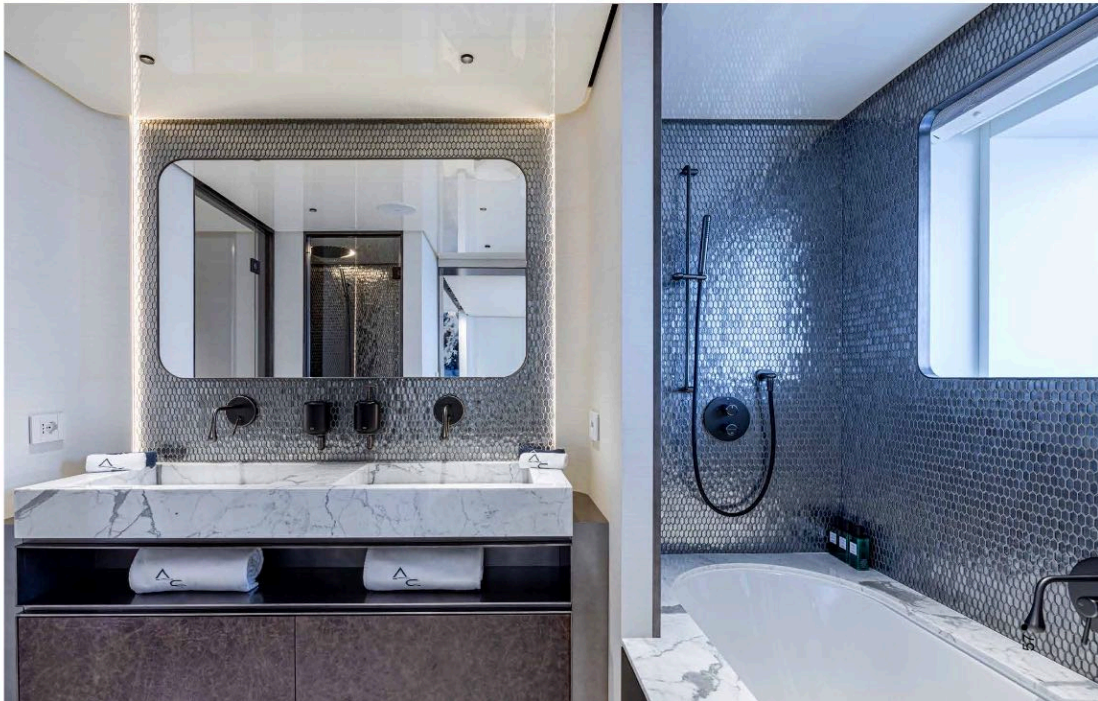
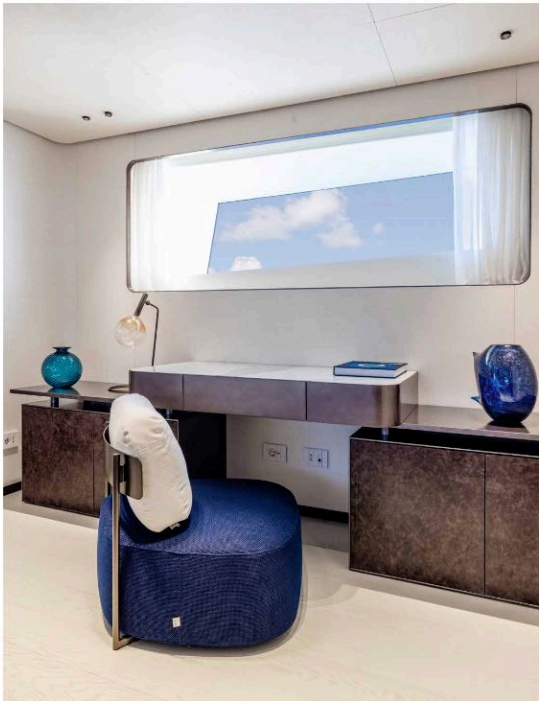
Four crew cabins sit forward on the lower deck, with comfortable space for nine crew including the Captain's cabin connected to the wheelhouse on the bridge deck.

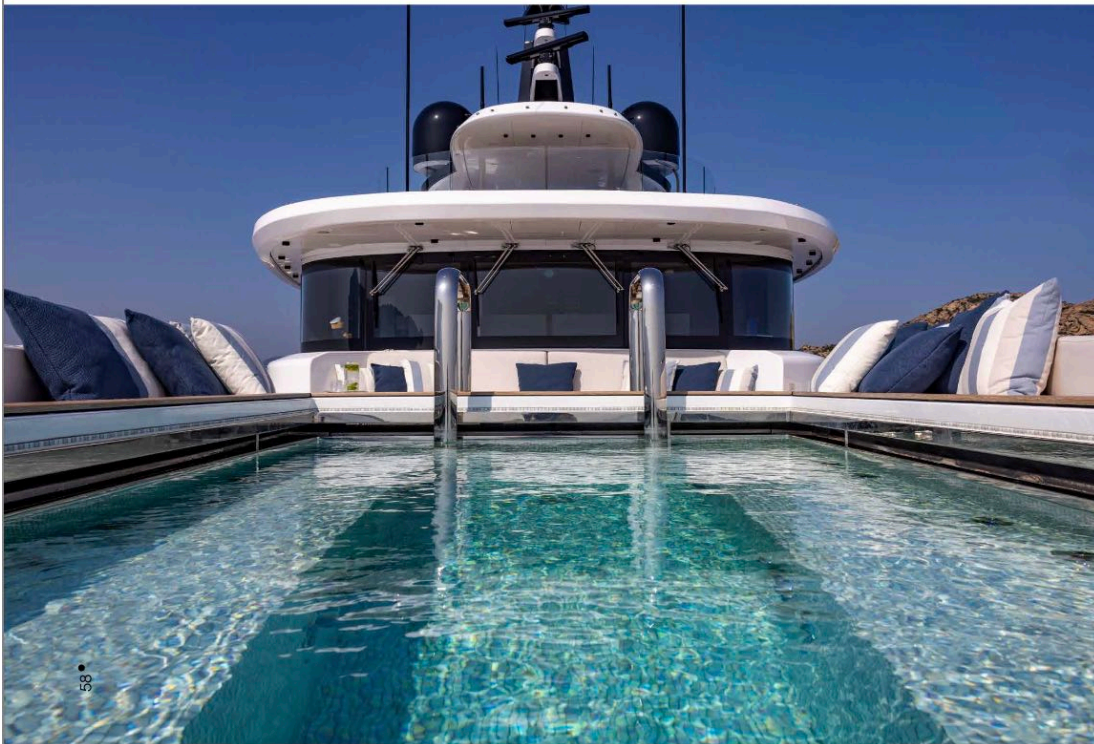




ACQUA CHIARA

ALLETTA





#### The Sun Deck

Softly textured, plush white sofas gather guests on the top deck of the yacht for memorable sundowners, morning meditation, or simply a relaxing read or chat. Sparked by brightly colored throw pillows and white circular occasional tables, the space is casual and comfortable. Glass bulwarks keep the views marvelous, and a glossy white bar mid-deck keeps refreshment close at hand.

Beyond the cover of the roof, a forward set of lounging pads offers a daytime sun session or a nighttime stargazing show. A stylish freestanding shower stands at the ready to refresh guests after sunning. A stair to starboard takes guests to the upper deck, just below.

#### Additional Details

For quick trips ashore or shuttling guests to and from the yacht, a five-meter Castoldi tender has its own garage to starboard. A Zodiac 360 rescue tender and jet skis find their niche in another garage located forward on the port side. Amenities on board include jet skis, paddleboards, Seabobs, a floating pool, a floating jet-ski dock, snorkeling equipment, and towable toys.

The Atlantique line is currently built in a range of sizes, from 38 to 65 meters. Designed for those who seek both luxury and comfort without compromise, Acqua Chiara's combination of design and performance stands out among her peers. The owner notes that the yacht was created from the very first lines and discussions as a yacht designed expressly for the charter market.

#### Columbus Yachts And The Ability To Dream

Using a tailor-made approach, Columbus creates yachts that transform their clients' most eclectic dreams into exclusive, bespoke yachts. Using premium materials, impeccable craftsmanship, and top-of-industry technology, Columbus is dedicated to merging elegance with performance in a way that reflects each client's personality.

A brand of Palumbo Superyachts, Columbus is joined by her sisters at boundary-pushing ISA Yachts, at the strongly personalized range 76 to 130-meter EXTRA Yachts, and at Mondomarine, using unrestrained imagination to create custom yachts from 40 to 75 meters.

Salvatore Palumbo opened its doors at Palumbo in 1967, beginning as a carpentry and metal fabrication yard, repairing ships in Naples. The high quality of the work being done caught the attention of the industry for hull repair and maintenance.

In 2008, the Palumbo family opened the superyacht division under the Columbus brand, applying family values, dedication, and hard work as they pursued the perfection their clients deserved. Palumbo Superyachts managed by Giuseppe Palumbo, has headquarters in Ancona, Italy, with shipyards in both Ancona and Savona.

Today, the company continues to aim toward perfection while endeavoring to balance profitability with an ethical, sustainable focus. Their mission continues to look toward setting new industry standards that exceed client expectations, while earning recognition for innovation, quality, and uncompromised commitment to excellence in every aspect and in every yacht. ☪

